

SAF 30 Sealant or
HP-9800 Liquid Flashing

Gard-Drain 700/or 990

HDPE Protection Roll or
Hydro-Ultra Mat G12
(Spot Weld Seams of HDPE)

Hydro-Prufe 80 mil PVC
Membrane (Loose Laid)

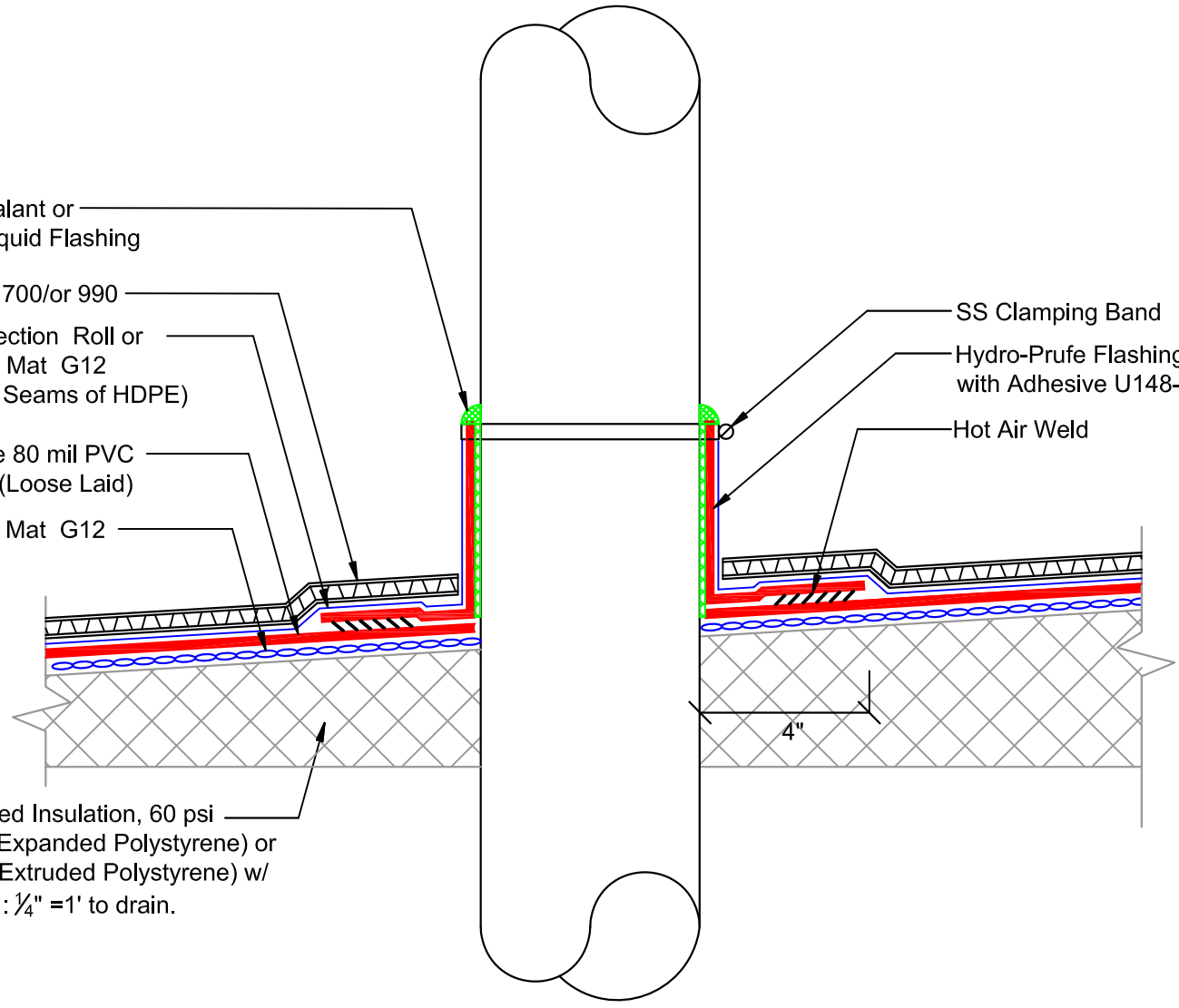
Hydro-Ultra Mat G12

SS Clamping Band

Hydro-Prufe Flashing Boot Adhered
with Adhesive U148-A or U410-D

Hot Air Weld

Tapered Insulation, 60 psi
EPS (Expanded Polystyrene) or
XPS (Extruded Polystyrene) w/
Slope : $\frac{1}{4}$ " = 1' to drain.



DETAIL NAME:

PIPE PENETRATION IN INSULATION

Scale:

NTS

Date:

11-04-16

Drawing #:

HP-PN-004